

1210 AWG Nylon Insulated Flanged Spade with Copper Support Sleeve

Material: Tin Plated Copper with Butted Seam

Insulation Material: Yellow 6/6 Nylon with Funnel Entry Copper Support Sleeve

Maximum Electrical Current: 50 Amps

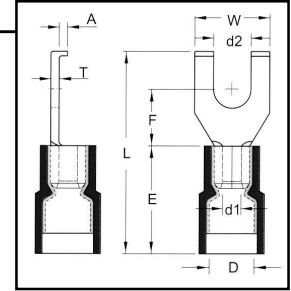
Maximum Electrical Rating: 75°C, 600V

Material Thickness (T): .039

Barrel ID (d1): .134

Barrel OD (D): .276 **J Type:** .157

Barrel Length (E): .512 **J Type:** .378



HOFFMAN PART NO.	STUD SIZE	DIMENSIONS (INCHES)						UL	TAPE MOUNTED REEL QTY	DIE FOR TAPE MOUNTED	HAND TOOL
		STUD DIAMETER	TONGUE WIDTH	STUD CLEARANCE	LENGTH	FLANGE HEIGHT					
		d2	W	F	L	A					
FND1210S3B	6	0.146	0.335	0.295	1.063	0.059	Y	1000	3V1210	YNM2210D	
FND1210S3B/J	6	0.146	0.299	0.244	0.992	0.059	Y	1000	3V1210	YNT1210S	
FND1210S4B	8	0.169	0.335	0.295	1.063	0.059	Y	1000	3V1210	YNM2210D	
FND1210S4B/J	8	0.169	0.299	0.244	0.992	0.059	Y	1000	3V1210	YNT1210S	
FND1210S5B	10	0.209	0.335	0.295	1.063	0.059	Y	1000	3V1210	YNM2210D	
FND1210S5B/J	10	0.209	0.299	0.244	0.992	0.059	Y	1000	3V1210	YNT1210S	

Click Here for Hand Tools
(Crimping Tools Section - page 96)

